

# Accessibility at Sky Lagoon

During our design and construction phase, a focus was put on making Sky Lagoon accessible. This included an open conversation with a representative from Sjálfsbjörg (The National Confederation of Physically Disabled People in Iceland), who advised in the design process.



We are proud to share Sky Lagoon with guests of all abilities and hope that we can encourage others in the industry to do the same.

***There is always  
room for improvement***

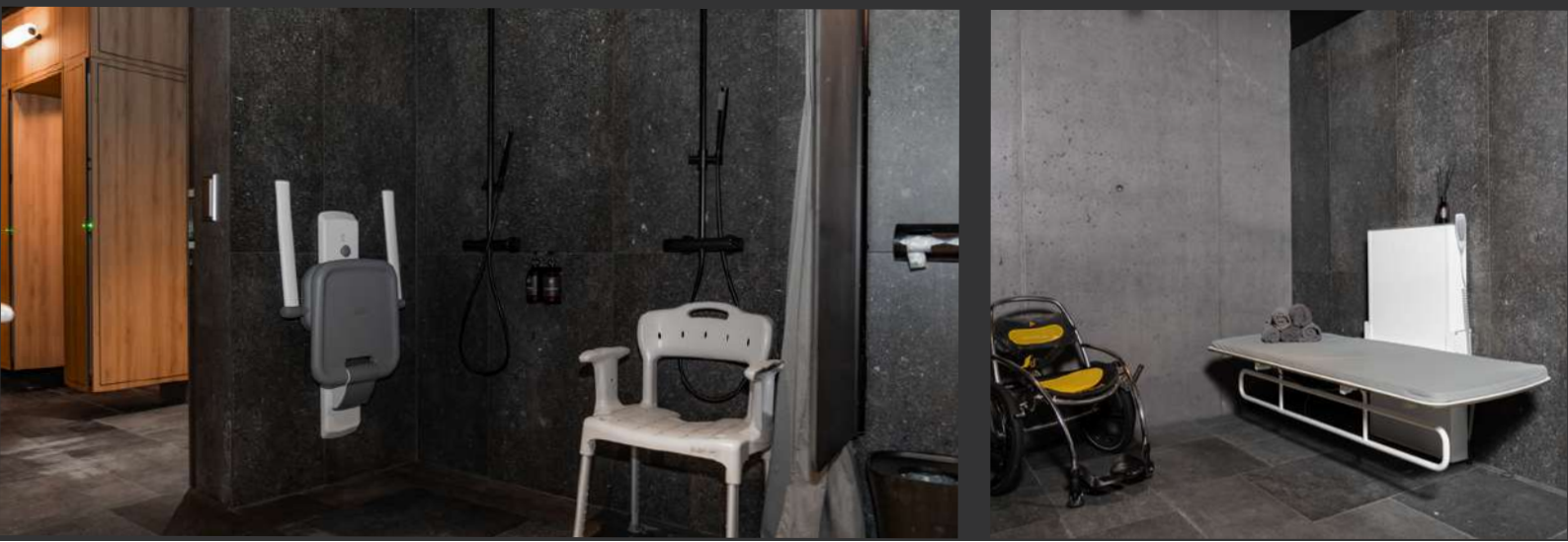
However, we do know that there is always room for improvement, as it is our ongoing mission to make everyone feel equally as welcome and comfortable when visiting Sky Lagoon.



OUR FACILITIES

## The Accessibility Suite

Our Accessibility Suite is a private accessible changing room which includes: Six lockable closets, large open space to maneuver, safety bell to ring for help, accessible mirror, moveable shower chair, support devices by shower, a large bench, an accessible toilet and more.



## ENTRANCE TO THE LAGOON

We offer an accessible lagoon chair lift for entering and exiting the lagoon.



## ENTRANCE FROM LAGOON TO COLD PLUNGE OR TURF HOUSE

We offer an accessible chair lift to take you from the lagoon to either (or both) the cold plunge or to the turf house to enjoy a journey through our Seven-Step Ritual.



## ON SITE WHEELCHAIR

For those who wish to visit the turf house we offer an on site wheelchair.

# Service

We strive to provide the same high level of service to all our guests and Sky Lagoon team members receive both training and education when it comes to providing service for people with disabilities.



Our team is equipped with walkie talkies so you can easily let them know before you go into the lagoon if you want to visit the cold plunge or turf house so they can have the lift and wheelchair ready for, or if you have any other concerns/things that need to be addressed. Our team will happily assist you all the way throughout your Sky Lagoon journey.